

# THREADED PROPORTIONER



## FEATURES

- **Bronze material construction for performance and durability**
- **Fresh or saltwater compatible**
- **Horizontal or vertical mounted position**

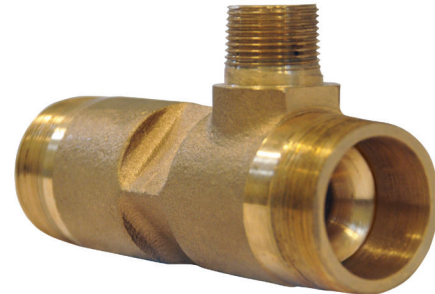
## DESCRIPTION

SOLBERG® Threaded Proportioners are modified venturi ratio controllers that accurately mix and meter foam concentrate into fire-water streams. Each proportioner consists of the following components: body, inlet nozzle, and metering orifice constructed out of ASTM 85-5-5-5 bronze material. The proportioner is designed with a male NPT threaded inlet and a male threaded outlet in sizes of 2.0" and 2.5", with the flow direction arrow clearly marked. During operation, water flows through the modified venturi to create an area of lower pressure which is directly affected by the water velocity as it flows through the ratio controller.

## APPLICATION

Typical high-hazard, high-risk applications including flammable liquid storage tanks, loading racks, aircraft hangars, heliports and anywhere flammable liquids are used, stored, processed, or transported.

You can count on SOLBERG Threaded Proportioners to correctly proportion and properly handle the mixing of SOLBERG foam concentrates into a water stream with little pressure loss. SOLBERG Threaded Proportioners are UL listed when used with SOLBERG foam concentrates and can be used with bladder tank systems and inline balanced pressure proportioning systems.



## SPECIFICATIONS

Each SOLBERG Threaded Proportioners body and inlet nozzle is made of bronze with the inlet nozzle and orifice being secured by a stainless retaining ring. The inlet and outlet of the proportioner body is to be a male NPT with clear markings indicating flow direction and concentrate type. The inlet nozzle is designed with a rounded inlet and a smooth machined finish to ensure minimum stream constriction and maximum velocity. The metering orifice is designed to the proper diameter for the specific foam concentrate type.

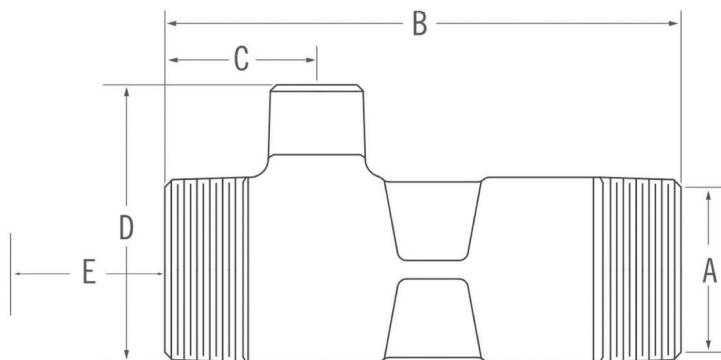
## CERTIFICATIONS

Underwriters Laboratories, Inc. (UL) Listed - Standard 162, FM Approved per Approval Standard 5130 (see FM Approval Guide).

# THREADED PROPORTIONER

## DIMENSIONAL INFORMATION

MODEL	APPROXIMATE DIMENSIONS Inches (Millimeters)				
	A	B	C	D	E
2.0" SRCW	2.38 (60)	7.00 (178)	2.06 (52)	3.75 (95)	10.00 (254)
2.5" SRCW	2.88 (73)	7.00 (178)	2.06 (52)	4.13 (105)	13.00 (330)



## FLOW RANGE

### UL LISTED - NOMINAL FLOW

MODEL	CONFIGURATION	CONCENTRATE INLET	SOLBERG ARCTIC 3x3% ATC gpm (lpm)	SOLBERG ARCTIC 1% SP AFFF gpm (lpm)	SOLBERG ARCTIC 3% AFFF gpm (lpm)	SOLBERG ARCTIC 3% MIL-SPEC AFFF gpm (lpm)
2.0" SRCW	Threaded	1.0" FNPT	90-166 (341-628)	44-131 (167-496)	42-263 (159-996)	45-205 (170-776)
2.0" SRCW	Threaded	1.0" FNPT	13.00 (330)	-	-	-
2.5" SRCW	Threaded	1.0" FNPT	-	86-282 (326-1067)	119-392 (450-1484)	114-375 (432-1420)

MODEL	CONFIGURATION	CONCENTRATE INLET	SOLBERG RE-HEALING RF3, 3% gpm (lpm)	SOLBERG VERSAGARD™ AS-100 gpm (lpm)	SOLBERG RE-HEALING 3x3 SP-100 AR-SFFF gpm (lpm)	SOLBERG EVOLUTION 3% SFFF gpm (lpm)
2.0" SRCW	Threaded	1.0" FNPT	58-246 (219-931)	57-244 (216-924)	52-255 (197-965)	58-245 (220-927)
2.0" SRCW	Threaded	1.0" FNPT	-	-	-	-
2.5" SRCW	Threaded	1.0" FNPT	111-540 (420-2044)	119-273 (450-1033)	155-470 (587-1779)	-

### FM APPROVED - NOMINAL FLOW

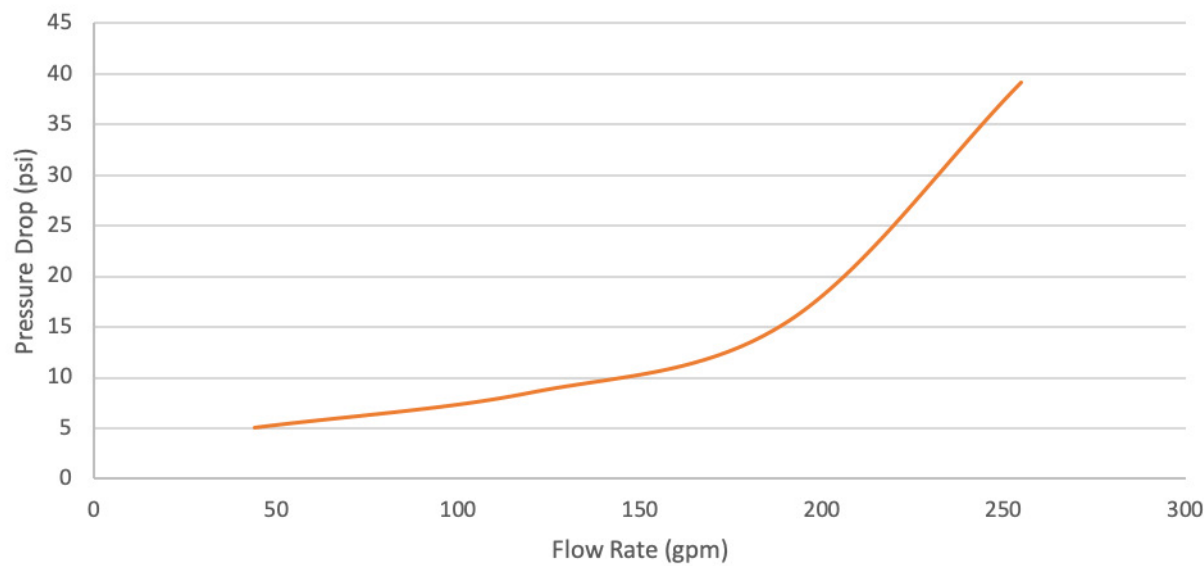
MODEL	CONFIGURATION	CONCENTRATE INLET	SOLBERG RE-HEALING RF3, 3% gpm (lpm)	SOLBERG ARCTIC 1% SP AFFF gpm (lpm)	SOLBERG ARCTIC 3% AFFF gpm (lpm)	SOLBERG RE-HEALING 3x3 SP-100 AR-SFFF gpm (lpm)	SOLBERG EVOLUTION 3% SFFF gpm (lpm)
2.0" SRCW	Threaded	1.0" FNPT	143-248 (541-939)	44-131 (167-496)	89-233 (337-882)	72-244 (273-924)	*59-218 (223-825)

\*FM Pending

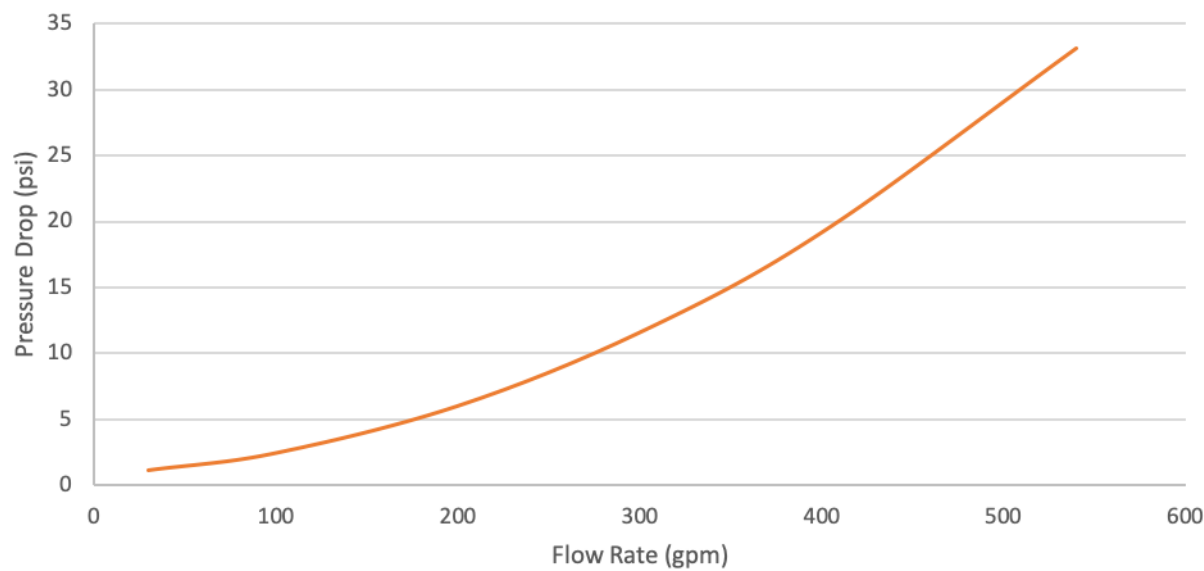
# THREADED PROPORTIONER

## PRESSURE LOSS CURVES

2" Ratio Controller Pressure Drop



2.5" Ratio Controller Pressure Drop



# SOLBERG® FOAM RATIO CONTROLLER (Between Flange)

## ORDERING INFORMATION

THREADED PROPORTIONER		APPROXIMATE SHIPPING WEIGHT	
PART NO.	DESCRIPTION	lb	kg
30002	Ratio Controller - Threaded, 2.0" (51 mm), SOLBERG RE-HEALING RF3, 3% (147-232 gpm)	5	2
30050	Ratio Controller - Threaded, 2.0" (51 mm), SOLBERG RE-HEALING RF3, 3% (181-246 gpm)	5	2
30051	Ratio Controller - Threaded, 2.0" (51 mm), SOLBERG RE-HEALING RF3, 3% (82-234 gpm)	5	2
30052	Ratio Controller - Threaded, 2.0" (51 mm), SOLBERG RE-HEALING RF3, 3% (72-126 gpm)	5	2
30053	Ratio Controller - Threaded, 2.0" (51 mm), SOLBERG RE-HEALING RF3, 3% (58-76 gpm)	5	2
30003	Ratio Controller - Threaded, 2.0" (51 mm), SOLBERG RE-HEALING RF 6, 6%	5	2
30004	Ratio Controller- Threaded, 2.0" (51 mm), SOLBERG ARCTIC 1% SP AFFF	5	2
30005	Ratio Controller - Threaded, 2.0" (51 mm), SOLBERG ARCTIC 3% AFFF	5	2
30008	Ratio Controller - Threaded, 2.0" (51 mm), SOLBERG ARCTIC 3% MIL-SPEC AFFF	5	2
30006	Ratio Controller - Threaded , 2.0" (51 mm), SOLBERG ARCTIC 3x3% ATC	5	2
30009	Ratio Controller - Threaded, 2.0" (51 mm), SOLBERG VERSAGARD AS-100 (89-244 gpm)	5	2
30011A	Ratio Controller - Threaded, 2.0" (51 mm), SOLBERG RE-HEALING 3x3 SP-100 AR-SFFF (83-255 gpm)	5	2
30011B	Ratio Controller - Threaded, 2.0" (51 mm), SOLBERG RE-HEALING 3x3 SP-100 AR-SFFF (52-90 gpm)	5	2
30012	Ratio Controller - Threaded, 2.0" (51 mm), SOLBERG RE-HEALING 3x3 SP-100 AR-SFFF (FM) - (72-244 gpm)	5	2
30068	Ratio Controller - Threaded, 2.0" (51 mm), SOLBERG EVOLUTION 3% SFFF (UL) - (58-245 gpm)	5	2
30069	Ratio Controller - Threaded, 2.0" (51 mm), SOLBERG EVOLUTION 3% SFFF (FM) - (59-218 gpm)	5	2
30031	Ratio Controller - Threaded, 2.5" (63 mm), SOLBERG RE-HEALING RF 3, 3% (185-540 gpm)	6	3
30054	Ratio Controller - Threaded, 2.5" (63 mm), SOLBERG RE-HEALING RF 3, 3% (135-194 gpm)	6	3
30055	Ratio Controller - Threaded, 2.5" (63 mm), SOLBERG RE-HEALING RF 3, 3% (111-139 gpm)	6	3
30032	Ratio Controller - Threaded, 2.5" (63 mm), SOLBERG RE-HEALING RF 6, 6%	6	3
30033	Ratio Controller - Threaded, 2.5" (63 mm), SOLBERG ARCTIC 1% SP AFFF	6	3
30034	Ratio Controller - Threaded, 2.5" (63 mm), SOLBERG ARCTIC 3% AFFF	6	3
30037	Ratio Controller - Threaded, 2.5" (63 mm), SOLBERG ARCTIC 3% MIL-SPEC AFFF	6	3
30035	Ratio Controller - Threaded, 2.5" (63 mm), SOLBERG ARCTIC 3x3% ATC	6	3
30038	Ratio Controller - Threaded, 2.5" (63 mm), SOLBERG VERSAGARD AS-100 (119-273 gpm)	6	3
30039	Ratio Controller - Threaded, 2.5" (63 mm), SOLBERG RE-HEALING 3x3 SP-100 AR-SFFF (155-470 gpm)	6	3



**Solutions That Save.**

### FOR MORE INFORMATION

Contact any of our worldwide Perimeter Solutions Fire Safety offices or visit:  
[www.Perimeter-Solutions.com](http://www.Perimeter-Solutions.com)

### UNITED STATES

10667 Jersey Blvd.  
Rancho Cucamonga, CA 91730  
Tel: +1 800 682 3626  
Tel: +1 909 983 0772  
[salesfoamusa@perimeter-solutions.com](mailto:salesfoamusa@perimeter-solutions.com)

### EMEA

Polígono Industrial de Baiña, Parcela 23  
33682 Baiña-Mieres (Asturias) - Spain  
Tel: +34 985 24 29 45  
[salesfoamea@perimeter-solutions.com](mailto:salesfoamea@perimeter-solutions.com)

### ASIA PACIFIC

3 Charles Street  
St Marys NSW 2760 - Australia  
Tel: +61 2 9673 5300  
[salesfoamapac@perimeter-solutions.com](mailto:salesfoamapac@perimeter-solutions.com)

[perimeter-solutions.com](http://perimeter-solutions.com)

**NOTICE** PERIMETER SOLUTIONS MAKES NO REPRESENTATIONS OR WARRANTIES AS TO THE COMPLETENESS OR ACCURACY OF THE INFORMATION INCLUDED HEREIN. THE INFORMATION CONTAINED HEREIN IS NOT INTENDED TO PROVIDE REGULATORY, LEGAL OR EXPERT ADVICE RELATING TO THE PRODUCTS, ITS APPLICATION OR USES. NOTHING CONTAINED HEREIN IS TO BE CONSTRUED AS A RECOMMENDATION TO USE ANY PRODUCT, PROCESS, EQUIPMENT OR FORMULATION IN CONFLICT WITH ANY INDUSTRIAL PROPERTY OR INTELLECTUAL PROPERTY RIGHTS, AND PERIMETER SOLUTIONS MAKES NO REPRESENTATION OR WARRANTY, EXPRESS OR IMPLIED, THAT THE USE THEREOF WILL NOT INFRINGE ON ANY INDUSTRIAL PROPERTY OR INTELLECTUAL PROPERTY RIGHTS. NO REPRESENTATIONS OR WARRANTIES, EITHER EXPRESSED OR IMPLIED, OF MERCHANTABILITY, FITNESS FOR A PARTICULAR PURPOSE OR OF ANY OTHER NATURE ARE MADE HEREUNDER WITH RESPECT TO THE INFORMATION CONTAINED HEREIN.

© 2025 PERIMETER SOLUTIONS LP. ALL RIGHTS RESERVED. ARCTIC, P TRIANGLE DESIGN, PERIMETER SOLUTIONS, RE-HEALING, SOLBERG, AND VERSAGARD, QUALITY PRODUCTS. EXCEPTIONAL RESPONSE, ARE TRADEMARKS OF PERIMETER SOLUTIONS, LP. ALL OTHER TRADEMARKS ARE THE PROPERTY OF THEIR RESPECTIVE OWNER.

F-2011008-11