

WD881

CLASS A FOAM CONCENTRATE

 **PHOS-CHEK**
FIRE RETARDANT | FOAM | GEL



Since 1963, firefighters around the world have relied on PHOS-CHEK® fire chemicals to help them fight fire. Elite firefighters rely on PHOS-CHEK WD881 Class A foam concentrate to significantly enhance water's effectiveness.

Class A foam makes water more effective by reflecting heat, insulating fuel, increasing heat absorption, clinging to vertical surfaces and penetrating deep into burning fuel.

WD881 Class A foam enhances a firefighter's ability to fight fire fast. Foam provides faster knockdown and reduces the amount of water used to suppress a fire. Overhaul can be completed up to three times faster using WD881.

PHOS-CHEK WD881 is effective on all types of fires including structural, vehicle, tire and nuisance fires. It is also effective on coal mine fires, many industrial fires and running fuel fires.

In addition, WD881 works to neutralize bee stings, decontaminate chemical agents, and suppress toxic vapors. And for over 30 years, wildland fire agencies, including the USFS, have relied on WD881 for aerial and ground attack and prescribed burning.

WHAT IS PHOS-CHEK WD881 CLASS A FOAM AND HOW DOES IT WORK?

Water, as it is converted into steam, has tremendous capacity to absorb and carry away heat. Unfortunately, water's strong surface tension causes it to bead up and roll off most fuels and away from heat too fast to be able to absorb its full heat capacity.

PHOS-CHEK WD881 contains a unique combination of surfactants that significantly reduces water's surface tension. As a result, water containing low concentrations (0.1% to 1.0%) of PHOS-CHEK WD881 foam concentrate:

- Stretches out the water droplet into a bubble and holds it that way, increasing its heat absorbing surface
- Penetrates deep into Class A fuels
- Has an affinity for carbon. PHOS-CHEK WD881 bonds with carbon like a magnet holding the water against the fuel. It grabs onto smoke greatly increasing visibility and reducing knockdown time
- Reduces the amount of water needed to fight a fire because it uses it much more effectively. Using less water provides many benefits including:
 - > Less property damage
 - > Reduction of toxic products of combustion into the environment
 - > Preservation of fire scene for arson investigation
 - > Protects structures and fuels by blanketing the surface with bubbles
 - > Increases firefighter safety through quicker knockdown and increased overhaul properties



WHAT IS DIFFERENT ABOUT PHOS-CHEK COMPARED TO OTHER CLASS A FOAM PRODUCTS?

PHOS-CHEK WD881 is the most concentrated Class A foam available today. Many other products contain significantly more water, up to 85%. Are you paying for foam concentrate or a bucket of water?



PHOS-CHEK WD881 has special properties and has passed third party laboratory testing criteria not matched by any other product. PHOS-CHEK WD881:

- Passes and exceeds U.S Government Environmental, Health, Safety and Corrosion standards and requirements by similar agencies around the world
- Contains no EPA listed hazardous materials
- Readily biodegrades in the environment and meets all technical requirements of the National Fire Protection Association (NFPA) Standard #1150
- Extinguishes both Class A and B fires- passing UL Wetting Agent tests at the following use rates:
 - > Class A fire - Ordinary combustibles; wood, paper, plastic, rubber at 0.1% or 1 gallon of concentrate per 1000 gallons of water
 - > Class B fire- Flammable liquid hydrocarbon; gasoline, diesel fuel, kerosene at 0.25% or 2.5 gallons of concentrate per 1000 gallons of water
- Smells like oranges. A proprietary ingredient only available in PHOS-CHEK WD881 Class A foam

OK, HOW MUCH DOES IT COST?

About 3 cents per finished gallon of foam solution. We recommend starting percentages at .2%. This equates to 1 gallon of concentrate for every tank load (500 gallons) on your fire apparatus.



WETTER IS BETTER

Now that you understand the benefits of using PHOS-CHEK, we would like to give you some guidelines for use.

Less is more. Always use PHOS-CHEK WD881 at rates less than 1%. Using more just wastes concentrate. While we would like to sell you more foam concentrate, we are confident that once you see how well PHOS-CHEK WD881 works at low use rates, you'll buy no other product.

Always remember that it is still water that is removing the heat from the fire. Using lower PHOS-CHEK WD881 percentages takes advantage of its ability to lower water's surface tension, and soak into the fuel.

Higher (up to 1%) percentages tie water up into a bubble mass that holds water and releases it very slowly; ideal for structure protection and wildland brush pre-treatment.

WHAT EQUIPMENT IS NEEDED TO USE PHOS-CHEK?

You can experience WD881 in your fire apparatus as easily as Batch-Mixing. Just add 1 gallon to the booster tank (500 gallons) and proceed with operations. You will quickly see the benefit of using WD881. Batch mixing is inexpensive and simple, but continued fire flow on large incidents becomes difficult.



Direct Injection System is a discharge side injection pump that uses a flow sensor to measure water flow, controlled by a computer, to run a foam injection pump that injects foam concentrate into the outgoing water. These systems have been on the market more than 15 years and are very accurate and reliable. We recommend these systems because they are very accurate and simple to operate, which is beneficial when injecting concentrate at the low rates we support.

Eductors are the most simple form of proportioning equipment. They are used "in-line" in the hose lay or "hard piped" behind the pump panel for dedicated foam discharge. Eductors continually meter small amounts of concentrate into the hose line. Benefits and limitations of eductors are:

- Inexpensive
- Simple in theory
- Subject to rich and lean form flows dependent on flow pressure (nozzle partially closed)
- Limited hose lay length

Around-the-pump metering systems are connected across the pump and use a siphon injector to move concentrate into the water supply. A metering device in the pick-up tube is used to control the amount of concentrate. A round-the-pump metering system is based on water flow rate, and since they are provided water pressure from the apparatus pump, their performance is unaffected by nozzle selection, changes in length of hose lays, changes in engine pump pressure, and relative elevation of nozzle with respect to proportioner.

COMPRESSED AIR FOAM SYSTEMS (CAFS) AND PHOS-CHEK

These systems are becoming very reliable and more user friendly. The foam concentrate used in these systems determines their effectiveness. Leading OEM CAFS manufacturers recommend WD881 exclusively because of the success they have using our product. They use WD881 in their systems to ensure reliable quality foam production and to prevent potential mechanical problems. While the subject is broad, we have included an overview of the systems and importance of a quality Class A foam such as WD881.

CLASS A FOAM SPECIFICATION

The Fire Department requests purchase of Class A foam concentrate. The following items shall be included in the purchase specification to vendors:

CHEMICAL SPECIFICATION

1. Shall be 0.1% to 1.0% concentrate
2. Shall not contain any U.S. EPA listed hazardous materials such as glycol ether
3. No flash or fire when tested via a closed cup method
4. Surface tension maximum: 28 dynes/cm of 0.6% water solution at 70 degrees Fahrenheit
5. Specific gravity: Maximum 1.03
6. Freeze and thaw: shall have no effect
7. Biodegradable
8. Foam concentrate total water content less than 50%

REGULATIONS

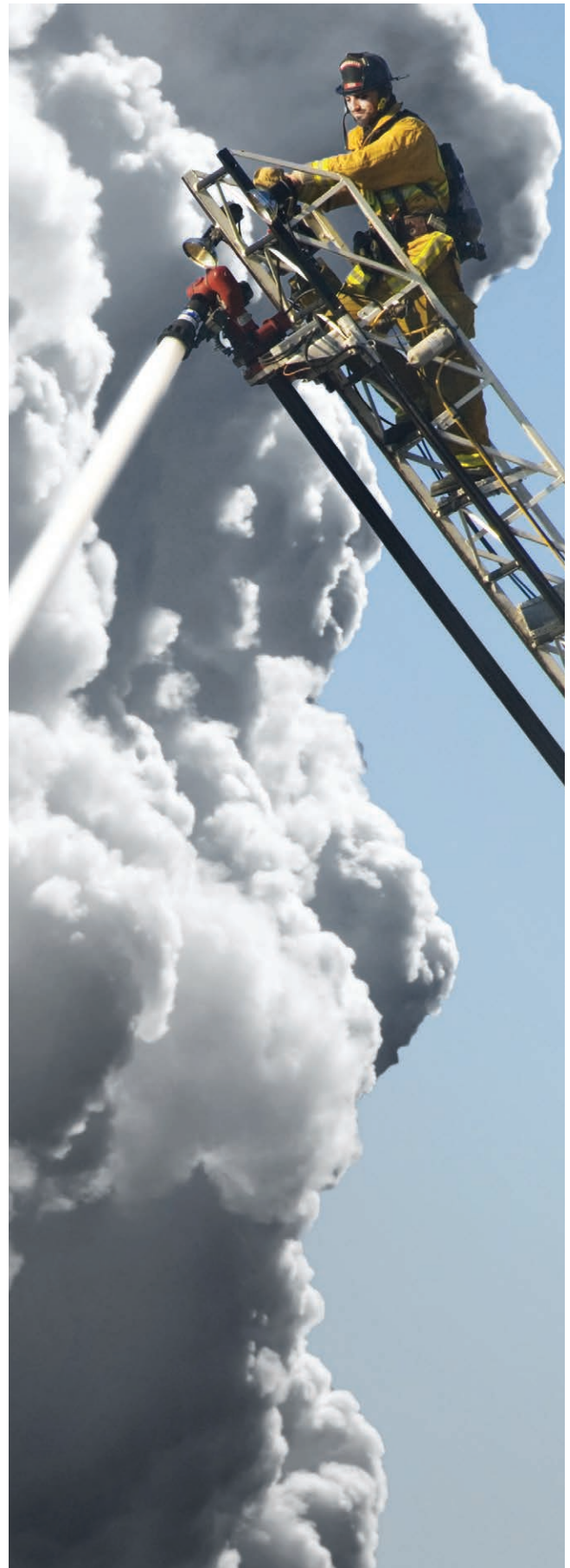
1. Shall meet NFPA 1150
2. Shall currently be on USDA Forest Service Qualified Products List (QPL) including approval for use in fixed tank helicopters
3. Shall be UL listed as a wetting agent at 0.1% use rate NO EXCEPTIONS

NOTE TO PURCHASING

Vendors must include the following documents with their bid submittal to validate product compliance with the above specification:

- U.S. Forest Service Qualified Products List
 - > Product name included and approved for use in all categories
- Underwriters Laboratory (UL) Wetting Agent Listing
 - > Verify listing exists and that use rate is 0.1%
- Safety Data Sheet (SDS)
 - > Under Regulatory Information Section – No SARA 313 chemicals
- Outside laboratory test results showing water content percentage
 - > Total water content less than 50%

If necessary, justification for the above specification can be obtained from the Fire Department.



COMPRESSED AIR FOAM SYSTEMS (CAFS)

- CAFS starts with a good accurate foam proportioning system. Once the foam solution has been produced in the discharge plumbing, air is introduced from the compressor into the foam solution, making bubbles in the line, adding energy to the hose stream.
- Benefits are smaller bubble production (more surface area = more heat absorption), increased stream reach, and lighter hose lines.
- Reliability of the foam concentrate is very important to make these systems function correctly. Water is incompressible. When air is introduced into the discharge water stream with an inferior foam solution, slug flow will result. Slug flow is the state of water-air-water-air in the hose causing intermittent jerking of the hose. This can be very dangerous. When the correct foam solution is in the discharge hose, the solution will flash to small uniform bubbles producing a smooth hose discharge. This is what CAFS was designed for. Using inferior foam concentrates cause SLUG FLOW. Use WD881 like all of the leading manufacturers to ensure your CAFS system works to its full ability..

ENVIRONMENTAL INFORMATION

PHOS-CHEK WD881 Class A foam concentrate does not contain any PFAS ingredients commonly found in fluorinated Class B foam concentrates. Perimeter Solutions foam manufacturing process is intentionally separated between fluorinated and non-fluorinated concentrate types, thus eliminating the potential for cross contamination or residual contamination.

WHERE CAN WE PURCHASE WD881?

Through an efficient dealer network and 24 hour emergency shipment availability from our manufacturing locations along with technical assistance when needed.

Please call 1-800-682-3626 for information about a dealer near you.

More Information on this product and subject can be obtained at www.phos-chek.com. Click on Class A Foam.

PURCHASING ASSISTANCE

We have provided a specification sheet adopted by many respected departments across the U.S. that will assure you the purchase of a quality foam product. Please feel free to use this specification and adopt it as your minimum qualification for Class A Foam.



Solutions That Save.

FOR MORE INFORMATION

Contact any of our worldwide Perimeter Solutions Fire Safety offices or visit

www.Perimeter-Solutions.com

UNITED STATES

10667 Jersey Blvd.
Rancho Cucamonga, CA 91730
Tel: (800) 682-3626
(909) 983-0772
24HR: (909) 946-7371

CANADA

3060 Airport Road
Kamloops, BC V2B 7X2
Canada
Tel: (250) 554-3530
24HR: (800) 665-2535

EUROPE

415, rue Armand-Pole d'Activities
F-13852 Aix-en-Provence Cedex 3
France
Tel: +33 (0) 4 42 24 45 08

AUSTRALIA

46 Hudson Crescent
Albury NSW 2641
Australia
Tel: +61 2 6040 6900

perimeter-solutions.com

NOTICE PERIMETER SOLUTIONS MAKES NO REPRESENTATIONS OR WARRANTIES AS TO THE COMPLETENESS OR ACCURACY OF THE INFORMATION INCLUDED HEREIN. THE INFORMATION CONTAINED HEREIN IS NOT INTENDED TO PROVIDE REGULATORY, LEGAL OR EXPERT ADVICE RELATING TO THE PRODUCTS, ITS APPLICATION OR USES. NOTHING CONTAINED HEREIN IS TO BE CONSTRUED AS A RECOMMENDATION TO USE ANY PRODUCT, PROCESS, EQUIPMENT OR FORMULATION IN CONFLICT WITH ANY INDUSTRIAL PROPERTY OR INTELLECTUAL PROPERTY RIGHTS, AND PERIMETER SOLUTIONS MAKES NO REPRESENTATION OR WARRANTY, EXPRESS OR IMPLIED, THAT THE USE THEREOF WILL NOT INFRINGE ON ANY INDUSTRIAL PROPERTY OR INTELLECTUAL PROPERTY RIGHTS. NO REPRESENTATIONS OR WARRANTIES, EITHER EXPRESSED OR IMPLIED, OF MERCHANTABILITY, FITNESS FOR A PARTICULAR PURPOSE OR OF ANY OTHER NATURE ARE MADE HEREUNDER WITH RESPECT TO THE INFORMATION CONTAINED HEREIN.