

THREADED PROPORTIONER



FEATURES

- **Bronze material construction for performance and durability**
- **Fresh or saltwater compatible**
- **Horizontal or vertical mounted position**

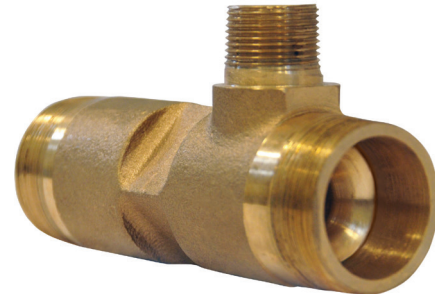
DESCRIPTION

Perimeter Solutions Threaded Proportioners are modified venturi ratio controllers that accurately mix and meter foam concentrate into fire-water streams. Each proportioner consists of the following components: body, inlet nozzle, and metering orifice constructed out of ASTM 85-5-5-5 bronze material. The proportioner is designed with a male NPT threaded inlet and a male threaded outlet in sizes of 2.0" and 2.5", with the flow direction arrow clearly marked. During operation, water flows through the modified venturi to create an area of lower pressure which is directly affected by the water velocity as it flows through the ratio controller.

APPLICATION

Typical high-hazard, high-risk applications including flammable liquid storage tanks, loading racks, aircraft hangars, heliports and anywhere flammable liquids are used, stored, processed, or transported.

You can count on Perimeter Solutions Threaded Proportioners to correctly proportion and properly handle the mixing of SOLBERG foam concentrates into a water stream with little pressure loss. SOLBERG Threaded Proportioners are UL listed when used with Solberg foam concentrates and can be used with bladder tank systems and inline balanced pressure proportioning systems.



SPECIFICATIONS

Each Perimeter Solutions Threaded Proportioners body and inlet nozzle is made of bronze with the inlet nozzle and orifice being secured by a stainless retaining ring. The inlet and outlet of the proportioner body is to be a male NPT with clear markings indicating flow direction and concentrate type. The inlet nozzle is designed with a rounded inlet and a smooth machined finish to ensure minimum stream constriction and maximum velocity. The metering orifice is designed to the proper diameter for the specific foam concentrate type.

CERTIFICATIONS

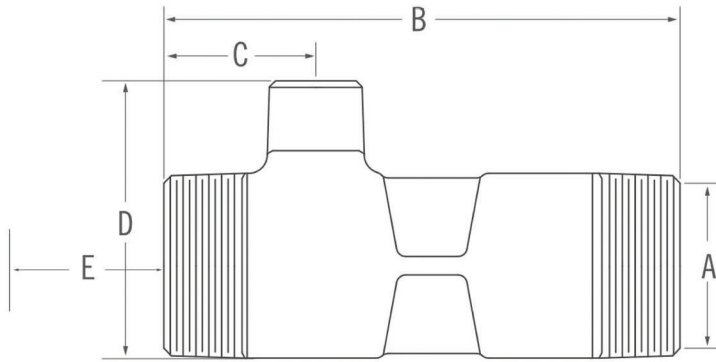
Underwriters Laboratories, Inc. (UL) Listed - Standard 162, FM Approved per Approval Standard 5130 (see FM Approval Guide).

THREADED PROPORTIONER

DIMENSIONAL INFORMATION

APPROXIMATE DIMENSIONS Inches (Millimeters)

| MODEL | A | B | C | D | E |
|-----------|-----------|------------|-----------|------------|-------------|
| 2.0" SRCW | 2.38 (60) | 7.00 (178) | 2.06 (52) | 3.75 (95) | 10.00 (254) |
| 2.5" SRCW | 2.88 (73) | 7.00 (178) | 2.06 (52) | 4.13 (105) | 13.00 (330) |



FLOW RANGE

UL LISTED - NOMINAL FLOW

| MODEL | CONFIGURATION | CONCENTRATE INLET | SOLBERG RE-HEALING™ RF3,3% gpm (lpm) | SOLBERG ARCTIC 1% SP AFFF gpm (lpm) | SOLBERG ARCTIC 3% AFFF gpm (lpm) | SOLBERG ARCTIC 3% MIL-SPEC AFFF gpm (lpm) | SOLBERG ARCTIC 3X3%ATC gpm (lpm) | SOLBERG VERSAGARD™ AS-100 | SOLBERG RE-HEALING 3x3 SP-100 |
|-----------|---------------|-------------------|--------------------------------------|-------------------------------------|----------------------------------|---|----------------------------------|---------------------------|-------------------------------|
| 2.0" SRCW | Threaded | 1.0" FNPT | 58-246 (219-931) | 44-131 (167-496) | 42-263 (159-996) | 45-205 (170-776) | 90-166 (341-628) | 57-244 (216-924) | 52-255 (197-965) |
| 2.0" SRCW | Threaded | 1.0" FNPT | - | - | - | - | 13.00 (330) | - | - |
| 2.5" SRCW | Threaded | 1.0" FNPT | 111-540 (420-2044) | 86-282 (326-1067) | 119-392 (450-1484) | 114-375 (432-1420) | - | 119-273 (450-1033) | 155-470 (587-1779) |

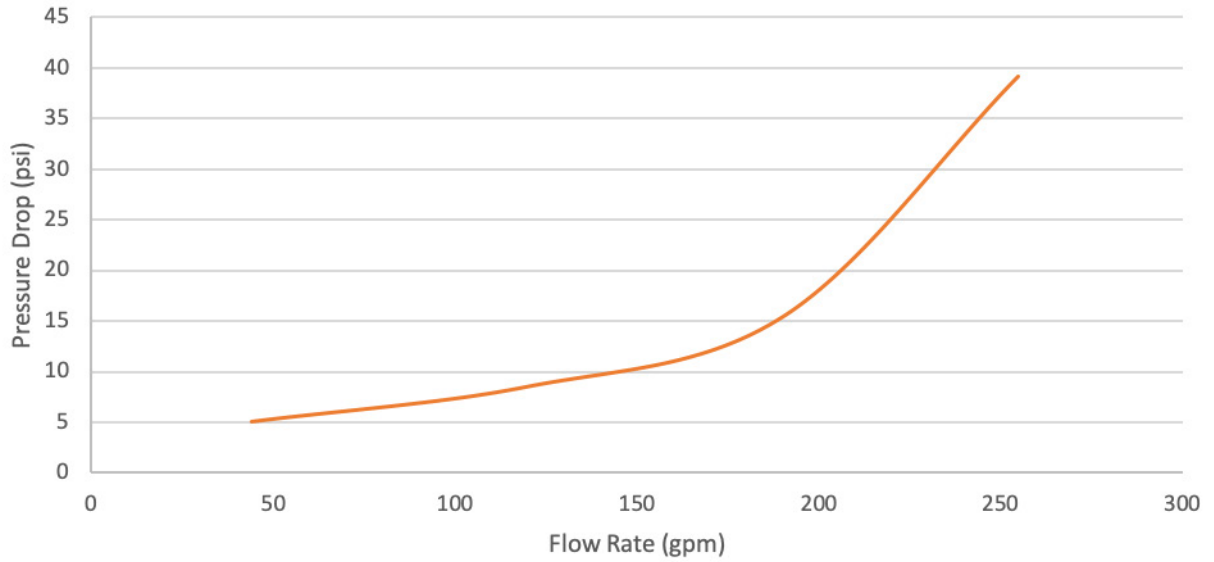
FM APPROVED - NOMINAL FLOW

| MODEL | CONFIGURATION | CONCENTRATE INLET | SOLBERG RE-HEALING RF3,3% gpm (lpm) | SOLBERG ARCTIC 1% SP AFFF gpm (lpm) | SOLBERG ARCTIC 3% AFFF gpm (lpm) |
|-----------|---------------|-------------------|-------------------------------------|-------------------------------------|----------------------------------|
| 2.0" SRCW | Threaded | 1.0" FNPT | 143-248 (541-939) | 44-131 (167-496) | 89-233 (337-882) |

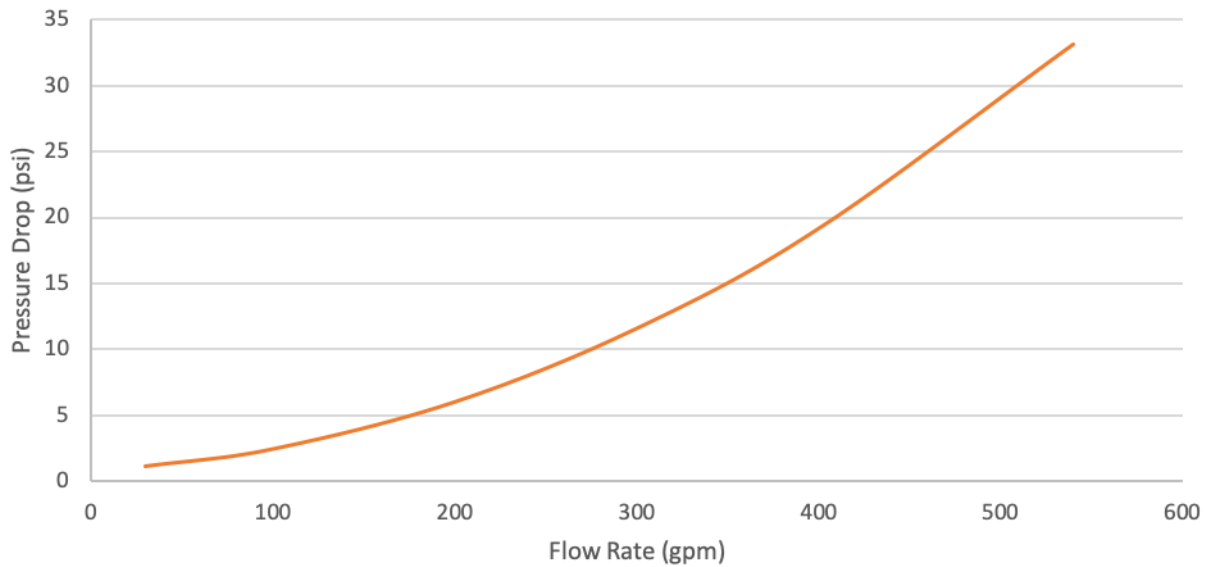
THREADED PROPORTIONER

PRESSURE LOSS CURVES

2" Ratio Controller Pressure Drop



2.5" Ratio Controller Pressure Drop



SOLBERG® FOAM RATIO CONTROLLER (Threaded)

ORDERING INFORMATION

| PART NO. | DESCRIPTION | APPROXIMATE SHIPPING WEIGHT | |
|----------|---|-----------------------------|----|
| | | lb | kg |
| 30002 | Ratio Controller - Threaded, 2.0" (51 mm), RE-HEALING RF3, 3% (147-232 gpm) | 5 | 2 |
| 30050 | Ratio Controller - Threaded, 2.0" (51 mm), RE-HEALING RF3, 3% (181-246 gpm) | 5 | 2 |
| 30051 | Ratio Controller - Threaded, 2.0" (51 mm), RE-HEALING RF3, 3% (82-234 gpm) | 5 | 2 |
| 30052 | Ratio Controller - Threaded, 2.0" (51 mm), RE-HEALING RF3, 3% (72-126 gpm) | 5 | 2 |
| 30053 | Ratio Controller - Threaded, 2.0" (51 mm), RE-HEALING RF3, 3% (58-76 gpm) | 5 | 2 |
| 30003 | Ratio Controller - Threaded, 2.0" (51 mm), RE-HEALING RF 6, 6% | 5 | 2 |
| 30004 | Ratio Controller - Threaded, 2.0" (51 mm), ARCTIC 1% SP AFFF | 5 | 2 |
| 30005 | Ratio Controller - Threaded, 2.0" (51 mm), ARCTIC 3% AFFF | 5 | 2 |
| 30008 | Ratio Controller - Threaded, 2.0" (51 mm), ARCTIC 3% MIL-SPEC AFFF | 5 | 2 |
| 30006 | Ratio Controller - Threaded, 2.0" (51 mm), ARCTIC 3x3% ATC | 5 | 2 |
| 30009 | Ratio Controller - Threaded, 2.0" (51 mm), 3x3 ATC/SFFF - VERSAGARD AS-100 (89-244 gpm) | 5 | 2 |
| 30011A | Ratio Controller - Threaded, 2.0" (51 mm), RE-HEALING SP-100 3x3 - (83-255 gpm) | 5 | 2 |
| 30011B | Ratio Controller - Threaded, 2.0" (51 mm), RE-HEALING SP-100 3x3 - (52-90 gpm) | 5 | 2 |
| 30012 | Ratio Controller - Threaded, 2.0" (51 mm), RE-HEALING SP-100 3x3 - (72-244 gpm) | 5 | 2 |
| 30031 | Ratio Controller - Threaded, 2.5" (63 mm), RE-HEALING RF 3, 3% (185-540 gpm) | 6 | 3 |
| 30054 | Ratio Controller - Threaded, 2.5" (63 mm), RE-HEALING RF 3, 3% (135-194 gpm) | 6 | 3 |
| 30055 | Ratio Controller - Threaded, 2.5" (63 mm), RE-HEALING RF 3, 3% (111-139 gpm) | 6 | 3 |
| 30032 | Ratio Controller - Threaded, 2.5" (63 mm), RE-HEALING RF 6, 6% | 6 | 3 |
| 30033 | Ratio Controller - Threaded, 2.5" (63 mm), ARCTIC 1% SP AFFF | 6 | 3 |
| 30034 | Ratio Controller - Threaded, 2.5" (63 mm), ARCTIC 3% AFFF | 6 | 3 |
| 30037 | Ratio Controller - Threaded, 2.5" (63 mm), ARCTIC 3% MIL-SPEC AFFF | 6 | 3 |
| 30035 | Ratio Controller - Threaded, 2.5" (63 mm), ARCTIC 3x3% ATC | 6 | 3 |
| 30038 | Ratio Controller - Threaded, 2.5" (63 mm), 3x3 ATC/SFFF - VERSAGARD AS-100 (119-273 gpm) | 6 | 3 |
| 30039 | Ratio Controller - Threaded, 2.5" (63 mm), 3x3 ATC/SFFF - RE-HEALING 3x3 SP-100 (155-470 gpm) | 6 | 3 |



Solutions That Save.

FOR MORE INFORMATION

Contact any of our worldwide Perimeter Solutions Fire Safety offices or visit:
www.Perimeter-Solutions.com

UNITED STATES

10667 Jersey Blvd.
Rancho Cucamonga, CA 91730
Tel: +1 800 682 3626
Tel: +1 909 983 0772
salesfoamusa@perimeter-solutions.com

EMEA

Polígono Industrial de Baiña, Parcela 23
33682 Baiña-Mieres (Asturias) - Spain
Tel: +34 985 24 29 45
salesfoameema@perimeter-solutions.com

ASIA PACIFIC

3 Charles Street
St Marys NSW 2760 - Australia
Tel: +61 2 9673 5300
salesfoamapac@perimeter-solutions.com

perimeter-solutions.com

NOTICE PERIMETER SOLUTIONS MAKES NO REPRESENTATIONS OR WARRANTIES AS TO THE COMPLETENESS OR ACCURACY OF THE INFORMATION INCLUDED HEREIN. THE INFORMATION CONTAINED HEREIN IS NOT INTENDED TO PROVIDE REGULATORY, LEGAL OR EXPERT ADVICE RELATING TO THE PRODUCTS, ITS APPLICATION OR USES. NOTHING CONTAINED HEREIN IS TO BE CONSTRUED AS A RECOMMENDATION TO USE ANY PRODUCT, PROCESS, EQUIPMENT OR FORMULATION IN CONFLICT WITH ANY INDUSTRIAL PROPERTY OR INTELLECTUAL PROPERTY RIGHTS, AND PERIMETER SOLUTIONS MAKES NO REPRESENTATION OR WARRANTY, EXPRESS OR IMPLIED, THAT THE USE THEREOF WILL NOT INFRINGE ON ANY INDUSTRIAL PROPERTY OR INTELLECTUAL PROPERTY RIGHTS. NO REPRESENTATIONS OR WARRANTIES, EITHER EXPRESSED OR IMPLIED, OF MERCHANTABILITY, FITNESS FOR A PARTICULAR PURPOSE OR OF ANY OTHER NATURE ARE MADE HEREUNDER WITH RESPECT TO THE INFORMATION CONTAINED HEREIN.